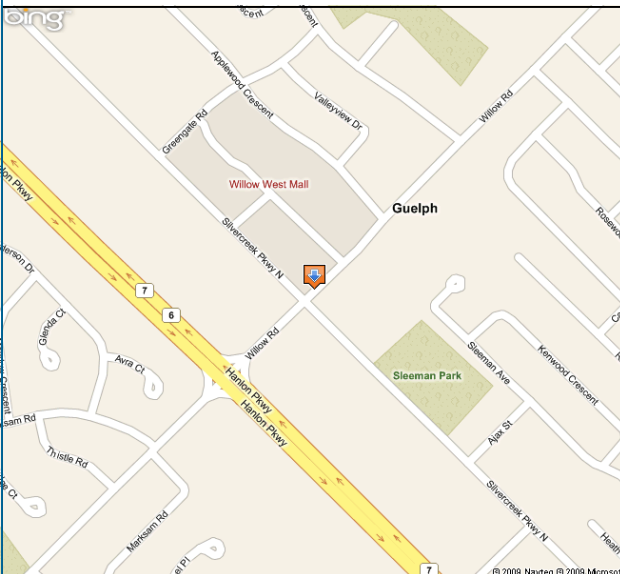
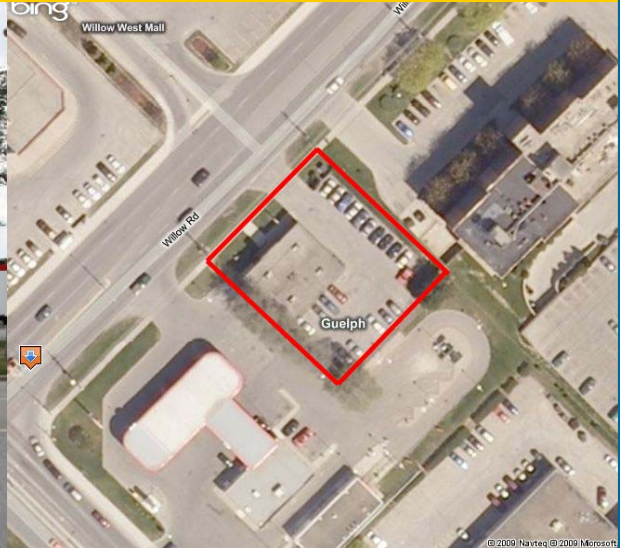


FOR LEASE

PROFESSIONAL OFFICE SPACE

300 WILLOW ROAD - UNIT #202, GUELPH, ONTARIO



Office space for lease in professional office building with free on-site parking. Conveniently located near many amenities and easy access to Expressway. Rental rate is all-inclusive.

<u>Space Available:</u>	
Unit #202:	+/- 734 Sq.Ft.
Heating:	Forced-Air Gas
Air-Conditioning:	Yes
Parking:	Free, On-Site
Zoning:	SC.1-14
Monthly Rent:	\$1,389.00 + GST (includes utilities)

MICHAEL MERKER
Broker of Record
Tel: 519.824.9900 x22
Fax: 519.824.2471
Email: mmerker@parkcapital.ca



COMMERCIAL

www.parkcapital.ca

Serving Local & Offshore Investors

PROFESSIONAL OFFICE SPACE

300 WILLOW ROAD - UNIT #202, GUELPH, ONTARIO

MICHAEL MERKER

Broker of Record

Tel: 519.824.9900 x22

Fax: 519.824.2471

Email: mmerker@parkcapital.ca

PARK CAPITAL INC.

76 Dawson Road

P.O. Box 923

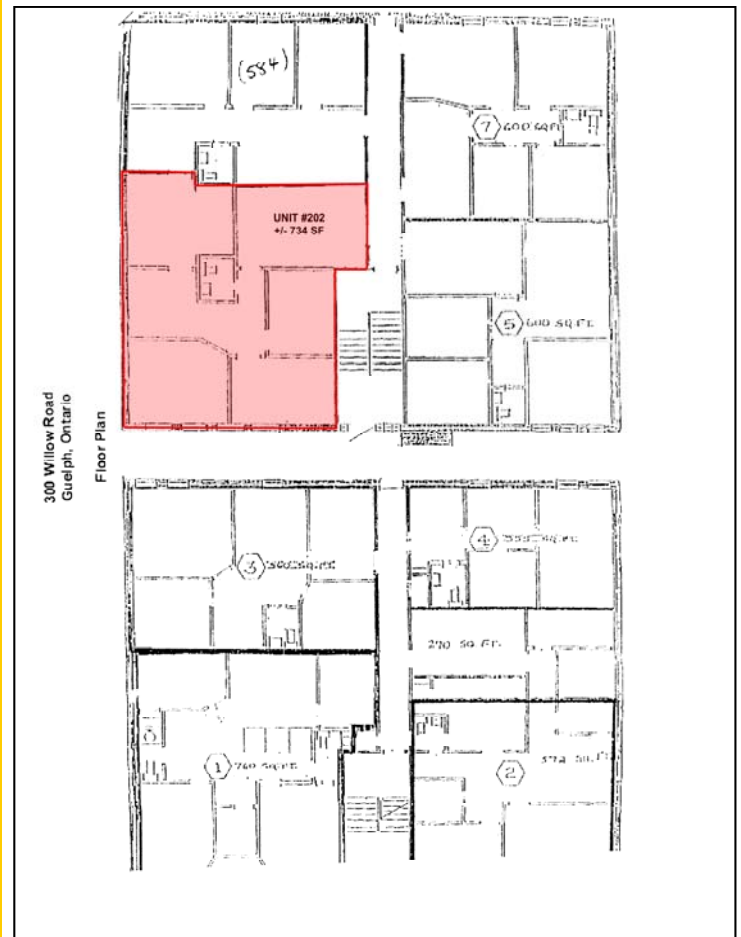
Guelph, Ontario N1H 6M6

Tel: 519.824.9900

Fax: 519.824.2471

Web: www.parkcapital.ca

Email: info@parkcapital.ca



The information contained herein is for advertising and general information purposes only. Park Capital Inc. and its agents have relied upon the owner and other sources for the information provided in this material and although we believe it to be substantially accurate, it is all subject to verification by the prospective purchaser or tenant and his/her/its respective legal, tax and other advisors. Park Capital Inc. and its agents assume no liability for the accuracy or use of this information in any manner by anyone and reliance upon or use of this information by anyone is solely at his/her/its own risk. Park Capital Inc. and its agents reserve the right to change prices, terms and other conditions or withdraw the property from sale and/or lease without notice. This material does not constitute an offer for sale or lease. Park Capital Inc., Brokerage.



COMMERCIAL