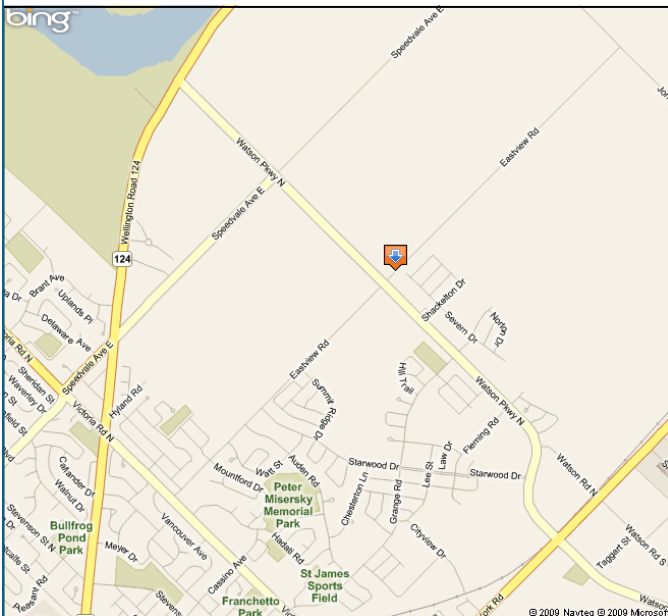


FOR LEASE

ALMONDALE PLAZA

NEW COMMERCIAL SPACE

320 EASTVIEW ROAD, GUELPH, ONTARIO



OPPORTUNITY:

Now pre-leasing prime commercial space in new commercial development. Located in prime corner location in growing residential area.

Space Available:	Units from +/- 1,500 SF
Zoning:	SC.1
Occupancy:	Summer/Fall 2010
Lease:	Landlord's Standard
A.A.D.T.	+/- 6,800/day (2007)
Minimum Rent:	TBN

MICHAEL MERKER

Broker of Record
 Tel: 519.824.9900 x22
 Fax: 519.824.2471
 Email: mmerker@parkcapital.ca



COMMERCIAL

www.parkcapital.ca

Serving Local & Offshore Investors

FOR LEASE

ALMONDALE PLAZA

NEW COMMERCIAL SPACE

320 EASTVIEW ROAD, GUELPH, ONTARIO

MICHAEL MERKER

Broker of Record

Tel: 519.824.9900 x22

Fax: 519.824.2471

Email: mmerker@parkcapital.ca

PARK CAPITAL INC.

76 Dawson Road

P.O. Box 923

Guelph, Ontario N1H 6M6

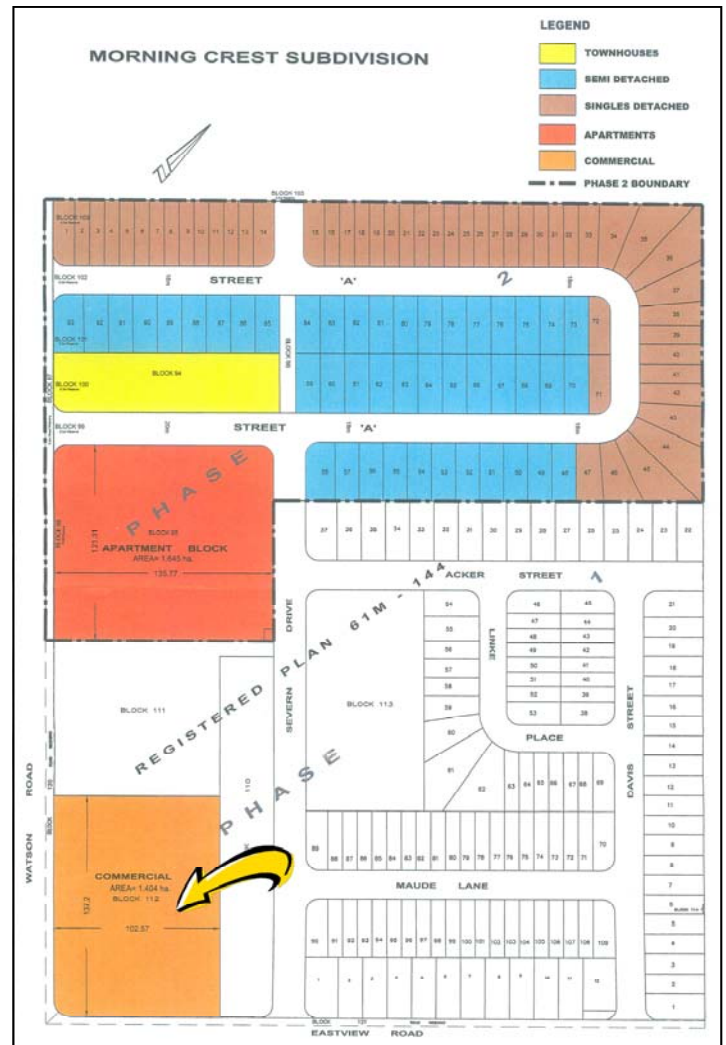
Tel: 519.824.9900

Fax: 519.824.2471

Web: www.parkcapital.ca

Email: info@parkcapital.ca

The information contained herein is for advertising and general information purposes only. Park Capital Inc. and its agents have relied upon the owner and other sources for the information provided in this material and although we believe it to be substantially accurate, it is all subject to verification by the prospective purchaser or tenant and his/her/its respective legal, tax and other advisors. Park Capital Inc. and its agents assume no liability for the accuracy or use of this information in any manner by anyone and reliance upon or use of this information by anyone is solely at his/her/its own risk. Park Capital Inc. and its agents reserve the right to change prices, terms and other conditions or withdraw the property from sale and/or lease without notice. This material does not constitute an offer for sale or lease. Park Capital Inc., Brokerage.



COMMERCIAL

www.parkcapital.ca

Serving Local & Offshore Investors

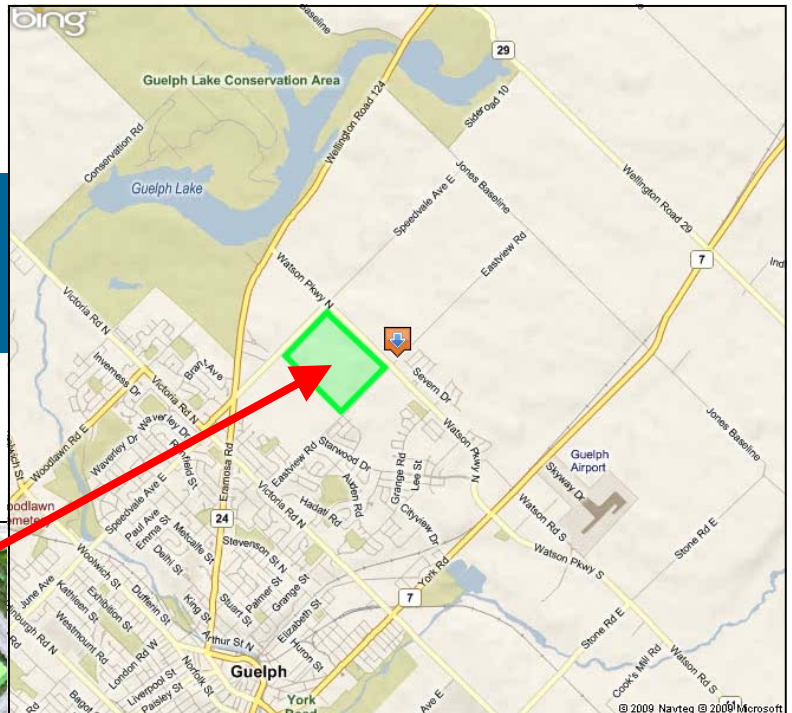
FOR LEASE

ALMONDALE PLAZA

NEW COMMERCIAL SPACE

320 EASTVIEW ROAD, GUELPH, ONTARIO

**PROPOSED EASTVIEW
COMMUNITY AND
POLLINATORS PARK**



PROPOSED AMENITIES:

- Pollinators Park
- 4 Soccer Fields (Lit and Irrigated)
- 2 Football Fields (Lit and Irrigated)
- 1 Multi-Purpose Field/Natural Ice Surface
- Children's Play Area, including Waterplay, Junior & Senior Play Equipment
- 8 Beach Volleyball Courts
- 2 Basketball Courts
- Concession/Washroom/Changeroom Facility



COMMERCIAL

www.parkcapital.ca

Serving Local & Offshore Investors