



Park Capital Inc., Brokerage  
76 Dawson Road, P. O. Box 923  
Guelph, ON, N1H 6M6

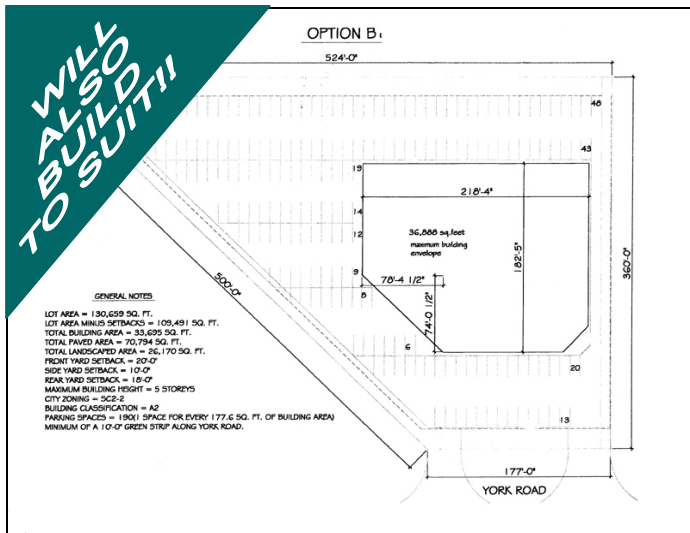
Tel: (519) 824-9900 – Fax: (519) 824-2471

[www.parkcapital.ca](http://www.parkcapital.ca)

COMMERCIAL

**FOR SALE:**

# Commercial Development Land



- Central Guelph Location
- Highway 7 Frontage
- Near University of Guelph
- High-traffic area
- Zoning allows for wide variety of uses

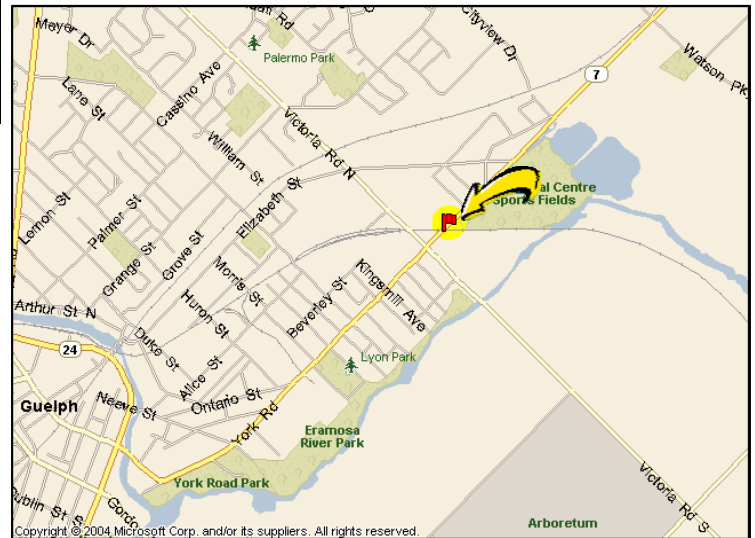
**Land Size:** +/- 3.0 Acres

**Frontage:** 177.22 Feet (Highway 7)

**Services:** Full municipal services available

**Zoning:** SC-2  
(Service Commercial)

**Asking Price:** **\$795,000.00**



For further information, please contact...

**Michael Merker** Ext. 22

Broker of Record/President  
[mmerker@parkcapital.ca](mailto:mmerker@parkcapital.ca)

Park Capital Inc., 76 Dawson Road, P.O. Box 923, Guelph, Ontario N1H 6M6  
Tel: (519) 824-9900 – Fax: (519) 824-2471 [www.parkcapital.ca](http://www.parkcapital.ca)



COMMERCIAL

(519) **824-9900**



The Realtor and its agents have relied upon the owner and other sources for the information provided in this material and although we believe it to be substantially accurate, it is all subject to verification by the prospective purchaser or tenant and his/her/its respective legal, tax and other advisors. The Realtor and its agents assume no liability for the accuracy or use of this information in any manner by anyone and reliance upon or use of this information by anyone is solely at his/her/its own risk. The Realtor and its agents reserve the right to change prices, terms and other conditions or withdraw the property from sale and/or lease without notice. This material does not constitute an offer for sale or lease. Not intended to solicit properties currently listed for sale or lease, or to entice parties to breach any existing agency contract.

